



Incon's new generation of Linear high bay series 203-07, while ensuring high energy efficiency, excellent light uniformity and long lifespan, aims to reduce the contractor's budget, making it an ideal choice for retrofit or new project installation. The compact structure design makes the installation of the fixture easier and faster. Each model supports CCT & Wattage Selectable, which improves the flexibility and convenience of on-site installation and significantly reduces stocking SKUs



SPECIFICATION FEATURES

Construction

- The rugged, one-piece die-cast aluminum housing features a rock-solid quality and performance.
- The LED module and driver are I-separated and extend service life through convection cooling, thermal management.
- The compact design saves labor cost and improves installation efficiency.
- Innovative contractor-friendly packaging makes installation faster.

Optics

- Light engines are available in color selectable version, the CCT can be changed to two CCTs (4000K, 5000K).
- Scalable Lumen Packages from 5,100 to 60,600 Lumens.
- Prismatic translucent lens is designed to shape the light uniformity and controls the glare light.

Electrical

- Universal 120-277VAC or 347-480VAC input voltage.
- Wattage adjustable: 100%, 80%, 60%, 40%.
- 0-10V dimming standard for a dimming range of 100% to 10%.
- PF >90%, THD <20%, 6KV surge protection.
- Operating Temperature Range: -40°C to 50°C (-40°F - + 122°F).
Note: Operating with emergency battery temperature range: 5°C to 50°C (+41°F - + 122°F).

Applications

- Suitable for commercial, retail and institutional applications including gymnasiums, factories and warehouses.

Controls

- Optional PIR Sensor or Bluetooth Smart Control Sensor available for further energy-saving.
- The standard sensor receptacle can quickly install sensors on site.

Installation

- Steel wire rope mount (default).
- Surface mount (option).
- Conduit pendant mount (option).

Lifespan

- Estimated 50,000-hour LED lifespan based on IES LM-80 results and TM-21 calculations.

Warranty

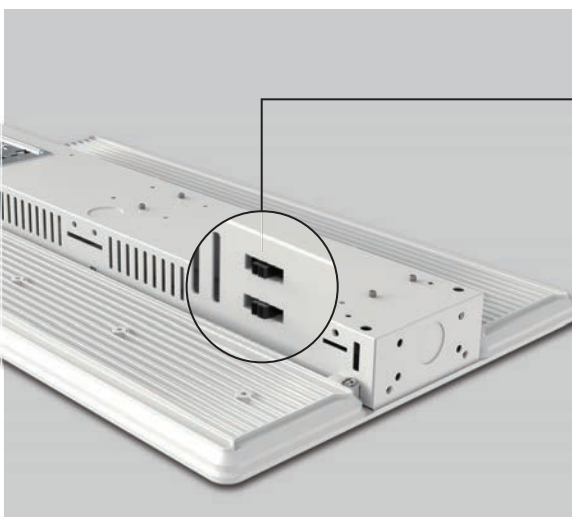
- Five-year limited warranty.

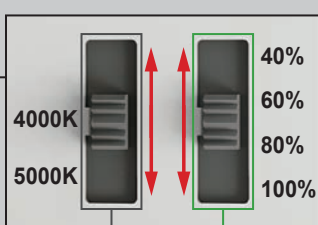
Certifications

- UL cUL damp location listed.

Note

- Actual performance may differ as a result of end-user environment and application. All values are design or typical values, measured under laboratory conditions at 25°C(±5°C) specifications subject to change without notice.





CCT AND WATTAGE SELECTABLE
This fixture has the function of adjusting the lumens output and color temperature on-site.

CCT SELECT

4000K 5000K

Offer two CCT adjustable (4000K, 5000K).

WATTAGE SELECT

40% 60% 80% 100%

Each model supports 4 positions wattage regulation: 100%, 80%, 60%, 40%

PERFORMANCE DATA

130W					
SETTING	SYSTEM WATTS	4000K (80CRI)		5000K (80CRI)	
		LUMENS	LPW	LUMENS	LPW
100%	130W	18500lm	142 lm/W	18500lm	142 lm/W
80%	104W	15200lm	146 lm/W	15200lm	146 lm/W
60%	78W	12100lm	155 lm/W	12100lm	155 lm/W
40%	52W	8200lm	158 lm/W	8200lm	158 lm/W

160W					
SETTING	SYSTEM WATTS	4000K (80CRI)		5000K (80CRI)	
		LUMENS	LPW	LUMENS	LPW
100%	160W	24100lm	151 lm/W	24100lm	151 lm/W
80%	128W	20000lm	156 lm/W	20000lm	156 lm/W
60%	96W	15500lm	161 lm/W	15500lm	161 lm/W
40%	64W	10600lm	166 lm/W	10600lm	166 lm/W

205W					
SETTING	SYSTEM WATTS	4000K (80CRI)		5000K (80CRI)	
		LUMENS	LPW	LUMENS	LPW
100%	205W	30500lm	149 lm/W	30500lm	149 lm/W
80%	164W	25000lm	152 lm/W	25000lm	152 lm/W
60%	123W	19500lm	159 lm/W	19500lm	159 lm/W
40%	82W	14000lm	171 lm/W	14000lm	171 lm/W

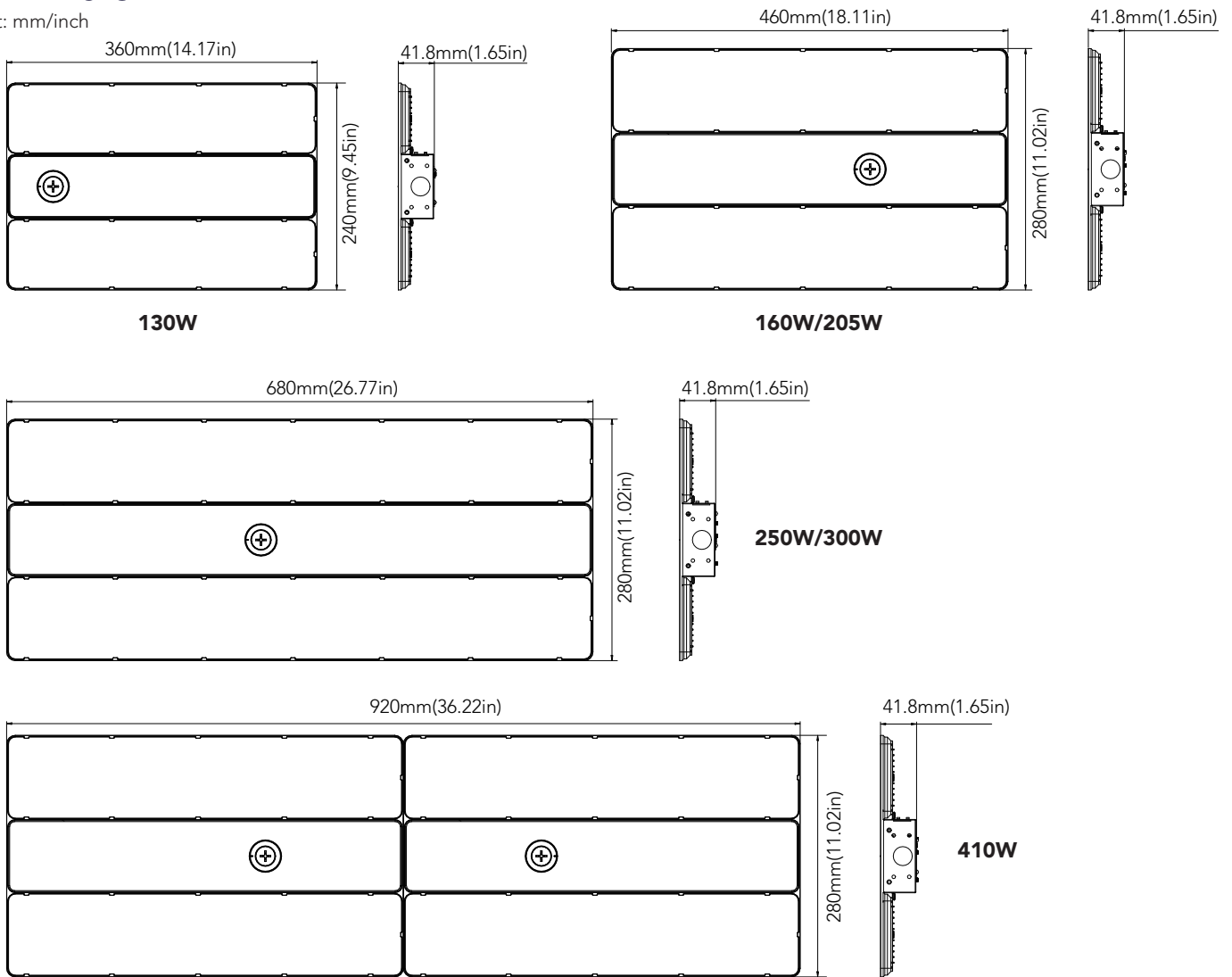
250W					
SETTING	SYSTEM WATTS	4000K (80CRI)		5000K (80CRI)	
		LUMENS	LPW	LUMENS	LPW
100%	250W	36100lm	144 lm/W	36100lm	144 lm/W
80%	200W	30200lm	151 lm/W	30200lm	151 lm/W
60%	150W	24000lm	160 lm/W	24000lm	160 lm/W
40%	100W	16400lm	164 lm/W	16400lm	164 lm/W

300W					
SETTING	SYSTEM WATTS	4000K (80CRI)		5000K (80CRI)	
		LUMENS	LPW	LUMENS	LPW
100%	300W	42000lm	140 lm/W	42000lm	140 lm/W
80%	240W	36000lm	150 lm/W	36000lm	150 lm/W
60%	180W	28000lm	156 lm/W	28000lm	156 lm/W
40%	120W	20000lm	167 lm/W	20000lm	167 lm/W


410W					
SETTING	SYSTEM WATTS	4000K (80CRI)		5000K (80CRI)	
		LUMENS	LPW	LUMENS	LPW
100%	410W	60600lm	148 lm/W	60600lm	148 lm/W
80%	328W	50000lm	152 lm/W	50000lm	152 lm/W
60%	246W	38400lm	156 lm/W	38400lm	156 lm/W
40%	164W	28000lm	171 lm/W	28000lm	171 lm/W

DIMENSION

unit: mm/inch

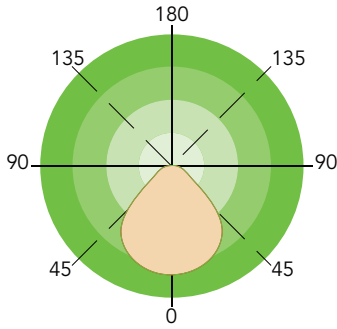


ACCESSORIES (Optional)

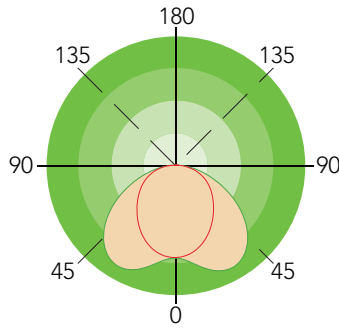
		
<p>Emergency Battery 8W 900lm 90min, suit for 130W (Sold separately)</p>	<p>Emergency Battery 15W 2000lm 90min, suit for 160W, 205W (Sold separately)</p>	<p>Emergency Battery 25W 3500lm 90min, suit for 250W, 300W, 410W (Sold separately)</p>
		
<p>Plug-and-Play PIR Sensor 12-24VDC PIR sensor: MSANT12VPH01 Bluetooth PIR sensor: MSANT12VPHB01 (Sold separately)</p>	<p>Steel Wire Rope(Default) USE: Chain mounting.</p>	

Note: Main Stacking sensor's SKU: MSANT12VPH01.

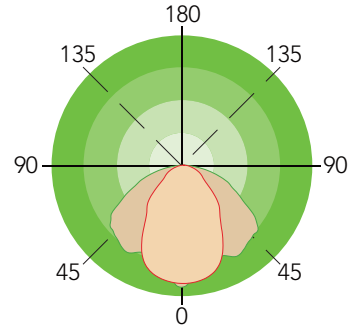
PHOTOMETRICS



General



Aisle

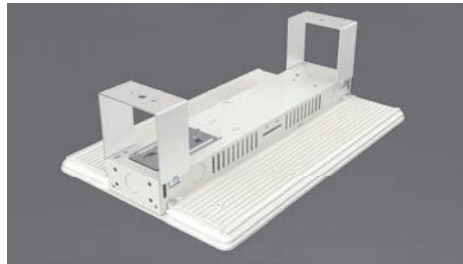


Narrow

MOUNTING



Mounting With Steel Wire Rope
(Default)



Surface Mounting



Conduit Pendant Mount

ORDERING GUIDE

Example: 203-07-205W-27V-2CCT-W-PD-M

Fixture Type	Wattage	Voltage	CCT	Finish	Lens	Sensor (Option)	Backup Battery (Option)	Internal Code
<input type="checkbox"/>	<input type="checkbox"/>	<input type="checkbox"/>	<input type="checkbox"/>	<input type="checkbox"/>	<input type="checkbox"/>	<input type="checkbox"/>	<input type="checkbox"/>	<input type="checkbox"/>
203-07 Linear high bay series	130W 160W 205W 250W 300W 410W	27V 120-277V	2CCT CCT Adjustable	W White	PD Prismatic Diffuser	M Motion Sensor Blank Without Sensor	B8 - 8W Emergency Battery B15 - 15W Emergency Battery B25 - 25W Emergency Battery Blank Without Emergency Battery	Blank Alphanumeric