

The Incon 8004GN Gooseneck LED flood luminaire is available in two wattages with 5 Gooseneck arms of various lengths, and optical distributions designed to replace HID lighting systems from 70w to 175w MH or HPS. Typical lighting applications include retail centers, industrial parks, schools and universities, public transit and airports, signage, office buildings and medical facilities. Designed for architectural wall mounting up to heights of up to 20 feet based on light level and uniformity requirements.

8004 Specifications and Features:

Housing:

Die Cast Aluminum Housing and Front Frame, Integral Heat Sinking and Driver Compartment. Nickel-Plated Stainless Steel Hardware.

Listing & Ratings:

ETL: Listed for Wet Locations, ANSI/UL 1598, 8750
IP66 Sealed LED Compartment.

Finish:

Powdercoat Finish Over a Chromate Conversion Coating. Custom Colors Available Upon Request.

Lens:

Tempered Clear Flat or SoftLED Flat Glass Lens

Mounting:

Adjustable Knuckle with 1/2" NPS Threads.

EasyLED LED:

Aluminum Boards

Driver:

Electronic Driver, 120-277V, 50/60Hz or 347-480V, 50/60Hz (37w Model Only); Less Than 20% THD and PF>0.90. Standard Internal Surge Protection is 2kV for 22w, 6kV for 37w. 0-10V Dimming Standard for a Dimming Range of 100% to 10%; Dimming Source Current is 150 Microamps.

Warranty:

5-Year Warranty for -40°C to +50°C Environment.

See Page 4 for Projected Lumen Maintenance Table.

Gooseneck Arm Specifications and Features:

Construction:

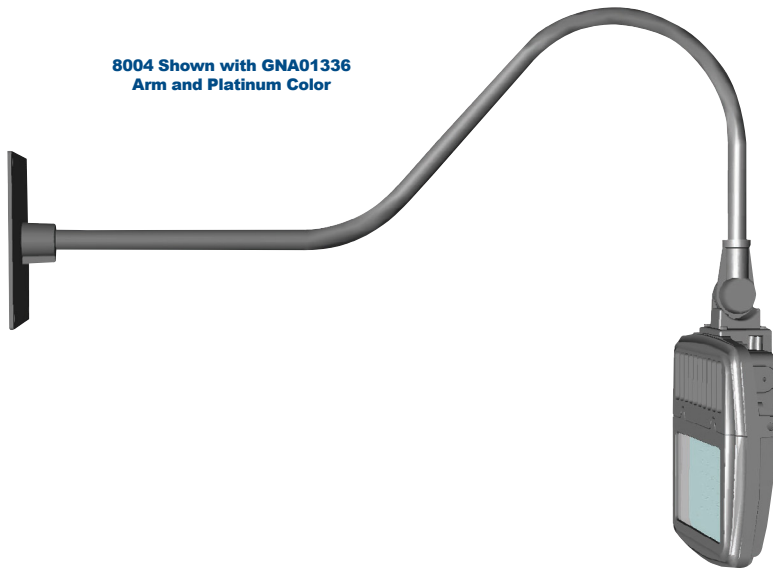
Heavy-Duty 3/4" Aluminum Arms with 3/4" NPS Threads on Fixture Mounting End.

Finish:

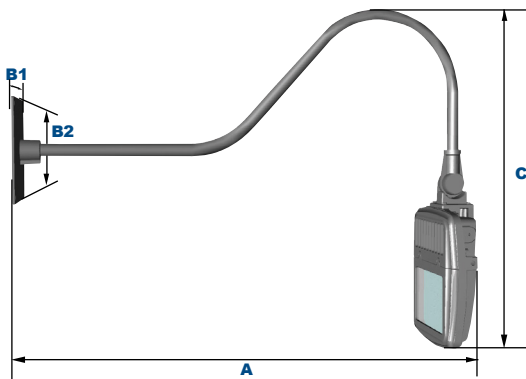
Powdercoat Finish Over a Chromate Conversion Coating. Custom Colors Available Upon Request.

Mounting Options:

Mount with 3/4" Square or Round Mounting Plates.



8004 Shown with GNA01336 Arm and Platinum Color



Dimensions

Base Length (B1)	8" (203mm)
Base Height (B2)	8" (203mm)
Length (A)	37" (939mm)
Height (C)	28 1/2" (724mm)

See Page 3 for Fixture and Arm Dimensions

Project Information:

Project Name: _____ Fixture Type: _____
 Complete Catalog #: _____ Date: _____
 Comments: _____

Certification & Listings:

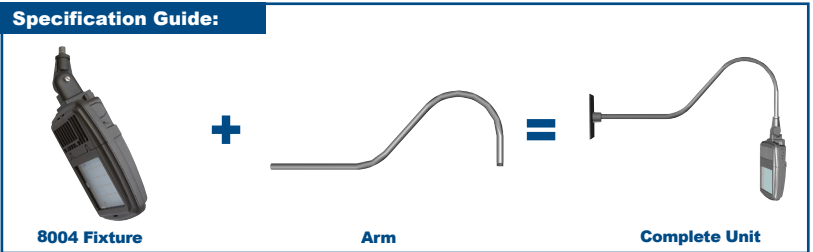


Step 1: Select 8004 Luminaire

Order Information Example:		8004F1X37U5KCPGNKSP						
Model	Beam	Wattage	Driver	CCT	Lens	Color	Mounting	Options
8004= EasyLED Mini Bentley Kitty Hawk Flood Light	C=NEMA 7H x 7V F=NEMA 7H x 7V I=NEMA 4H x 4V* *22 & 37w, 5K Model Only. See Page 3 for Distribution Information.	1X22=22w 1X37=37w OPTIMIZED 1X56=56w	U=120-277V H=347V-480* *37w Model Only.	3K=3000K* 4K=4000K* 5K=5000K *37w F Optic or 22w C & F Optic Models Only. *C & F Optic Only.	C=Standard Clear Flat Glass Lens S=SoftLED Flat Glass Lens* *F Optic Only.	B=Black, RAL9011 P=Platinum, RAL9006 R=Red, RAL3020 W=White, RAL9016 C=Custom (Consult Factory)	GNK=1/2" NPS Knuckle with Fittings and 72" of Wire for Arm Feed Through to Wall Box.	SF=Single Fusev* DF=Double Fuse* SP=Surge Protection *120-277V Models Only.

Step 2: Select Arm

Order Information Example:		GNA01336PS	
Model	Length	Color	Mounting
GNA013 - Classic Hook	36=36" 30=30"	B=Black, RAL9011 P=Platinum, RAL9006 R=Red, RAL3020 W=White, RAL9016 C=Custom (Consult Factory)	S=Square Oversized Wall Mount N=No Wall Mount
GNA023 - Straight	30=30" 24=24" 18=18" 12=12"		
GNA033 - Straight Offset	30=30" 24=24"		
GNA043 - Straight Rise	30=30"		
GNA053 - Round Hook	30=30" 24=24" 18=18"		



Accessories & Replacement Parts



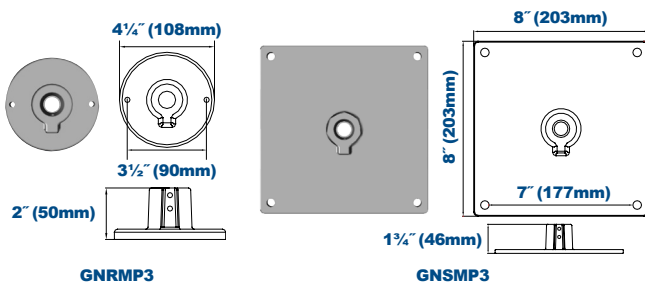
*Shown Mounted

Accessories (Order Separately, Field Installed)	
KH15GS*	Aluminum Glare Shield, Powdercoat Finish, Includes Hardware.
KH15WG	Wire Guard, Stainless Steel Construction, Includes Hardware.

*Specify Color: B=Black, P=Platinum, R=Red, W=White, C=Custom (Consult Factory)

Replacement Parts (Order Separately, Field Installed)	
KH15GLSS	SoftLED Flat Glass Lens

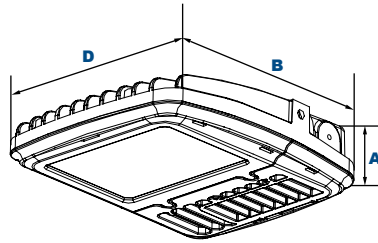
Wall Plate Dimensions



Replacement Wall Plates (Order Separately, Field Installed)	
GNRMP3*	Round Wall Mount Plate, Powdercoat Finish.
GNSMP3*	Square Oversized Wall Mount Plate, Powdercoat Finish.

*Specify Color: B=Black, P=Platinum, R=Red, W=White, C=Custom (Consult Factory)

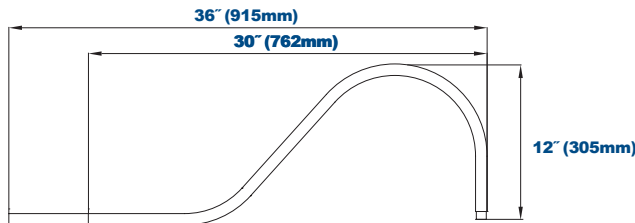
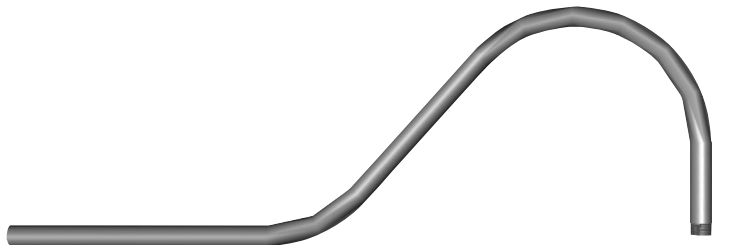
8004 Dimensions:



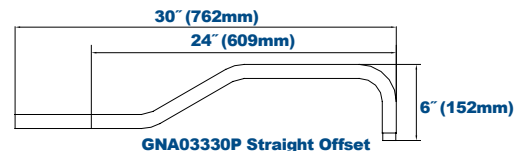
Dimensions

Width (D)	9½" (240mm)
Length (B)	11¼" (299mm)
Height (A)	3¾" (92mm)

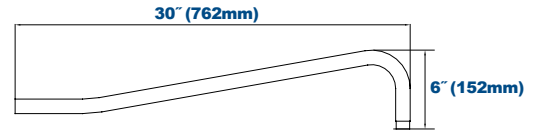
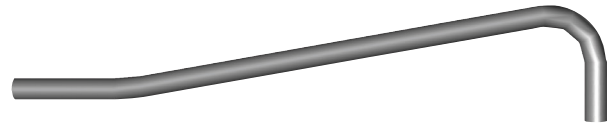
Gooseneck Dimensions



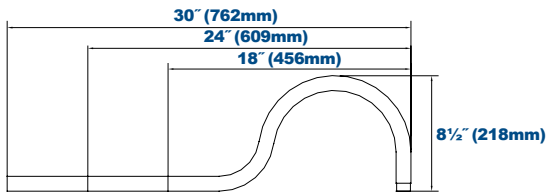
GNA01336P Classic Hook



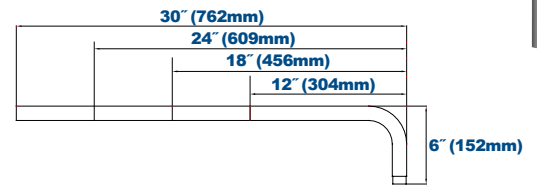
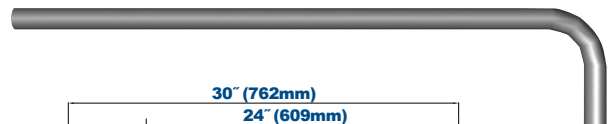
GNA03330P Straight Offset



GNA04330P Straight Rise

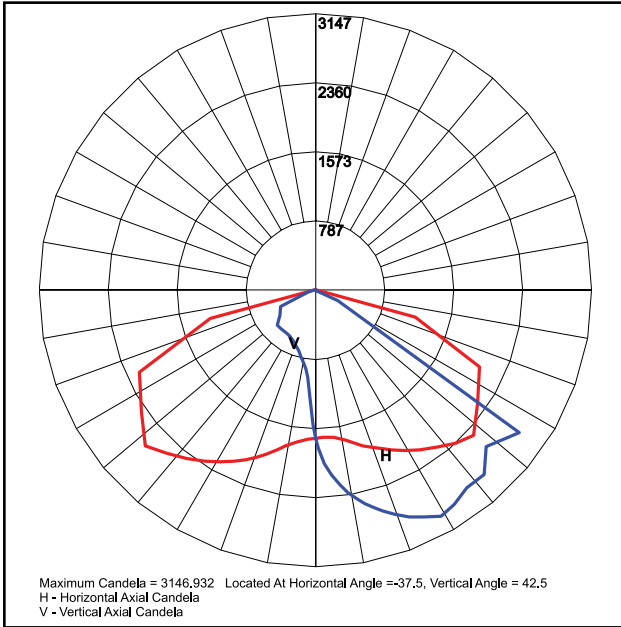


GNA05336P Round Hook

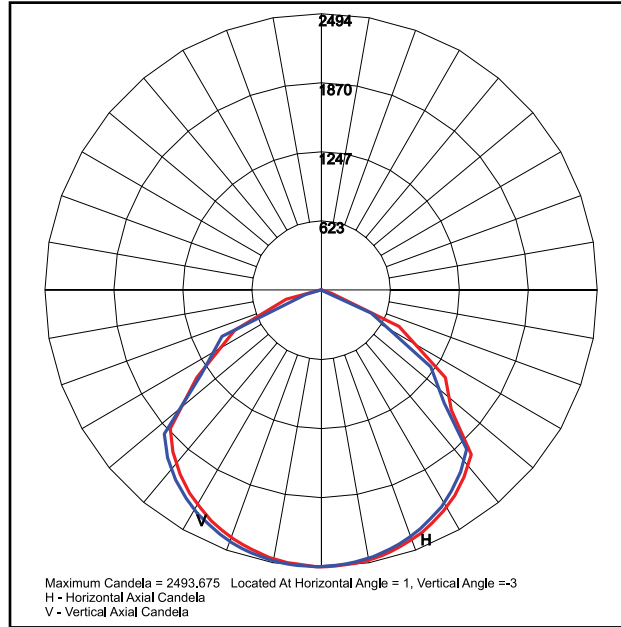


GNA02330P Straight

Photometric Data



8004C1X56U5KC
 120°H x 70°V, NEMA 7H x 7V



8004F1X56U5KC
 115°H x 110°V, NEMA 7H x 7V

Photometric Performance

LED Board Watts	Drive Current (mA)	Input Watts	Optics	5000 CCT 80 CRI		4000 CCT 80 CRI		3000 CCT 80 CRI	
				Lumens	LPW	Lumens	LPW	Lumens	LPW
EasyLED 22w	525	25	C 120°H x 70°V, NEMA 7H x 7V	2,854	115	2,747	111	2,640	106
			F 115°H x 110°V, NEMA 7H x 7V	2,749	111	2,646	107	2,543	103
			I 30°H x 30°V, NEMA 4H x 4V	2,723	110	-	-	-	-
EasyLED 37w	525	41	C 120°H x 70°V, NEMA 7H x 7V	4,800	117	4,620	113	-	-
			F 115°H x 110°V, NEMA 7H x 7V	4,623	113	4,450	109	-	-
			I 30°H x 30°V, NEMA 4H x 4V	4,581	112	-	-	4,237	104
Optimized EasyLED 56w	525	62	C 120°H x 70°V, NEMA 7H x 7V	7,416	120	7,138	116	-	-
			F 115°H x 110°V, NEMA 7H x 7V	7,143	116	6,875	111	-	-

Projected Lumen Maintenance

Data shown for 5000 CCT		Compare to MH				
TM-21-11	Input Watts	Initial	25,000 Hrs	50,000 Hrs	100,000 Hrs	Calculated LED Life
L70 Lumen Maintenance @ 25°C / 77°F	All wattages up to and including 62w	1.00	0.98	0.95	0.91	320,000
L70 Lumen Maintenance @ 50°C / 122°F		1.00	0.95	0.89	0.79	141,000
L80 Lumen Maintenance @ 40°C / 104°F		1.00	0.96	0.93	0.85	134,000

NOTES:

- Projected per IESNA TM-21-11. Data references the extrapolated performance projections for the base model in a 25°C ambient, based on 10,000 hours of LED testing per IESNA LM-80-08.
- Compare to MH box indicates suggested Light Loss Factor (LLF) to be used when comparing to Metal Halide (MH) systems.