



# INCON LIGHTING 9005AM, 9006AM & 9007AM

BUY AMERICAN COMPLIANT

Cypress 15 Full Cutoff Bollard

**AmberLED**  **147,000 Hours**



**9005AMF**  
Full Cutoff Bollard  
with 360° Distribution



**9006AMF**  
Full Cutoff Bollard  
with 180° Shield

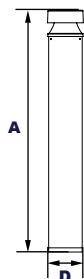


Shown with "S5"  
Sensor



Shown with GFCI

## Dimensions



**Diameter (D)** | 4 3/4" (120mm)  
**Height (A)** | 40 3/8" (1019mm)

## Project Information:

Project Name:

Fixture Type:

Complete Catalog #:

Date:

Comments:

For more information visit our website at [inconlighting.com/9005AM](http://inconlighting.com/9005AM)  
Ph: 800-393-5630 E: [sales@inconlighting.com](mailto:sales@inconlighting.com)

The Incon AmberLED Cypress 15 Full Cutoff Bollards with choice of optics are designed for wildlife, dark skies, or security applications requiring monochromatic AMBER light. LEDs operate between 585 and 595 nm, greater than 560nm required for wildlife protection. These fixtures are ideal for retail centers, industrial parks, schools and universities, public transit and airports, office buildings and medical facilities.

### Specifications and Features:

#### Housing:

Extruded Aluminum Housing with Flush Mounting Base, Flat Top. Bollards Can Be Cut to Custom Lengths Upon Request.

#### Listing & Ratings:

ETL: Listed for Wet Locations, ANSI/UL 1598, 8750  
IP66 Sealed LED Compartment.

#### Finish:

Textured Architectural Bronze or Black Powdercoat Finish Over a Chromate Conversion Coating. Custom Colors Available Upon Request.

#### Styles:

360° Light Distribution, 120° Shield or 180° Shield

#### Lens:

Clear UV-Stabilized Polycarbonate Vandal-Resistant Lens

#### Mounting Options:

Mounting Kit with 8" Zinc-Plated Anchor Bolts, Included.

#### AmberLED:

Aluminum Boards

#### Wattage:

360° Arrays: 14w, System: 16.1w  
180° & 120° Arrays: 14w, System: 16.1w

#### Driver:

Electronic Driver, 120-277V, 50/60Hz; Less Than 20% THD and PF>0.90. Standard Internal Surge Protection 2kV. 0-10V Dimming Standard for a Dimming Range of 100% to 10%; Dimming Source Current is 150 Microamps.

#### Controls:

Fixtures Ordered with Factory-Installed Motion Sensor Controls are Internally Wired for Switching and/or 1-10V Dimming Within the Housing. Remote Direct Wired Interface of 1-10V Dimming is Not Implied and May Not Be Available. Please Consult Factory. Fixtures are Tested with InCon Controls and May Not Function Properly With Controls Supplied By Others. Fixtures are NOT Designed for Use with Line Voltage Dimmers.

#### Warranty:

5-Year Warranty for -40°C to +50°C Environment.

See Page 3 for Projected Lumen Maintenance Table.

## Certification & Listings:



Specifications subject to change without notice.

Rev. 041224

# INCON LIGHTING 9005AM, 9006AM & 9007AM

BUY AMERICAN COMPLIANT

Cypress 15 Full Cutoff Bollard

**AmberLED** **L70**<sub>25°</sub> **147,000 Hours**

## Ordering Guide:

Model	U	AM	C	Color	Height	Options
Model	Driver	CCT	Lens	Color	Height	Options
<b>9005AMF1X14</b> =Cypress 15 Full Cutoff Bollard - 360°, 14w	<b>U</b> =120-277V	<b>AM</b> =1400K	<b>C</b> =Clear UV-Stabilized Polycarbonate Vandal-Resistant Lens	<b>Z</b> =Bronze <b>B</b> =Black <b>C</b> =Custom (Consult Factory)	<b>(Leave Blank)</b> 40 1/2" Standard Height <b>30</b> =30" Height	<b>SF</b> =Single Fuse* <b>DF</b> =Double Fuse* <b>SP</b> =Surge Protection <b>GF1</b> =GFCI Outlet, 15A, 120V <b>S5</b> =Microwave Sensor with Dimming & Remote Programming, 120-277V Only. See P17125 Spec Page for Details.*  *120-277V Models Only.
<b>9006AMF1X14</b> = Cypress 15 Full Cutoff Bollard with 180° Shield, 14w						
<b>9007AMF1X14</b> = Cypress 15 Full Cutoff Bollard with 120° Shield, 14w						

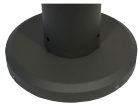
Order Information Example: **9005AMF1X14UAMCZ30SP**

## Accessories & Replacement Parts:

**Mounting Accessories**  
(Order Separately, Field Installed)

**BREBASE\*** Bollard Retrofit Base Kit Adapts New Bollards to Most Existing Bolt Patterns. Fits all InCon Bollards. Die Cast with Powdercoat Finish, Hardware Included. 1 1/2" Dia. x 1 1/2" H

\*Specify Color: Z=Bronze, B=Black, C=Custom (Consult Factory)



**BREBASE\***

\*Shown Mounted

**Accessories**  
(Order Separately, Field Installed)

**P17126** Remote Programming Tool for P17125



**P17126**

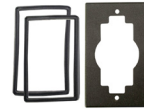
**Replacement Parts**  
(Order Separately, Field Installed)

**P17125** Internal Microwave Sensor with Dimming & Remote Programming, 120-277V Only. See P17125 Spec Page for Details.

**BOADP1** Adapter Plate with Gaskets for Outlet Boxes. Fits InCon Round Bollards. Die Cast with Bronze Powdercoat Finish.

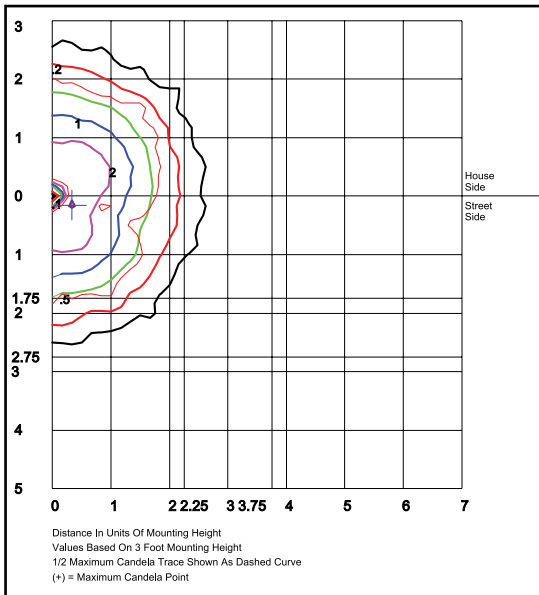


**P17125**



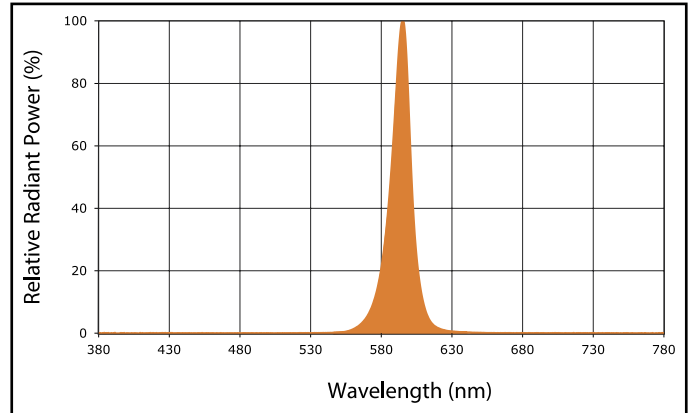
**BOADP1**

## Photometric Data



**9005AMF1X14UAM**  
**360° Open - Clear Glass Lens**  
Grid in feet, Mounting Height = 3 ft.

## Spectral Chart





# INCON LIGHTING 9005AM, 9006AM & 9007AM

BUY AMERICAN COMPLIANT

Cypress 15 Full Cutoff Bollard

**AmberLED**  **147,000 Hours**

## Photometric Performance

Wattage (Catalog Logic) 14W (1X14)			Wattage (Catalog Logic) 14W (1X14)		
Input Watts 16.1W			Input Watts 16.1W		
Optic	CCT	Delivered Lumens	Optic	CCT	Delivered Lumens
360° 9005AM Models F=Type V Optic	Amber	192	180° 9006AM Models F=Type V Optic	Amber	136
	BUG Rating	B0-U1-G0		BUG Rating	B0-U1-G0

## Projected Lumen Maintenance

Data shown for Amber LEDs	Input Watts	Compare to MH				Calculated LED Life
		Initial	25,000 Hrs	50,000 Hrs	100,000 Hrs	
L70 Lumen Maintenance @ 25°C / 77°F	All wattages up to and including 14w	1.00	0.95	0.90	0.80	147,000
L70 Lumen Maintenance @ 50°C / 122°F		1.00	0.89	0.78	0.55	67,000
L80 Lumen Maintenance @ 40°C / 104°F		1.00	0.92	0.85	0.70	66,000

### NOTES:

1. Projected per IESNA TM-21-11. Data references the extrapolated performance projections for the base model in a 25°C ambient, based on 10,000 hours of LED testing per IESNA LM-80-08.
2. Compare to MH box indicates suggested Light Loss Factor (LLF) to be used when comparing to Metal Halide (MH) systems.