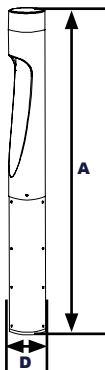




Shown with GFCI

## Dimensions



**Diameter (D)** | 4 3/4" (120mm)  
**Height (A)** | 43 3/4" (1100mm)

## Project Information:

<b>Project Name:</b>	<b>Fixture Type:</b>
<b>Complete Catalog #:</b>	<b>Date:</b>
<b>Comments:</b>	

## Specifications and Features:

### Housing:

Cast and Extruded Aluminum Housing with Flush Mounting Base, Flat Top.

### Listing & Ratings:

ETL: Listed for Wet Locations, ANSI/UL 1598, 8750; IP66 Sealed LED Compartment.

### Finish:

Textured Architectural Powdercoat Finish Over a Chromate Conversion Coating. Custom Colors Available Upon Request.

### Lens:

Clear UV-Stabilized Polycarbonate Vandal-Resistant Lens

### Mounting Options:

Mounting Kit with 8" Zinc-Plated Anchor Bolts, Included.

### AmberLED LED:

Aluminum Boards

### Wattage:

17w: Array: 17w, System: 18.7w

### Driver:

Electronic Driver, 120-277V, 50/60Hz; Less Than 20% THD and PF>0.90. Standard Internal Surge Protection 2kV. 0-10V Dimming Standard for a Dimming Range of 100% to 10%; Dimming Source Current is 150 Microamps.

### Warranty:

5-Year Warranty for -40°C to +50°C Environment.

See Page 3 for Projected Lumen Maintenance Table.

## Certification & Listings:



**Ordering Guide:**

9011AM	F	1X17	U	AM	C		
Model	Optics	Wattage	Driver	CCT	Lens	Color	Options
9011AM=AmberLED Cypress 11 Side Light Bollard	F=Asymmetric	1X17=17w	U=120-277V	AM=1400K	C=Clear Molded UV-Stabilized Polycarbonate Lens	Z=Bronze B=Black P=Platinum C=Custom (Consult Factory)	SF=Single Fuse* DF=Double Fuse* SP=Surge Protection GF1=GFCI Outlet, 15A, 120V  *120-277V Models Only.

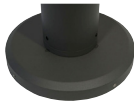
**Order Information Example: 9011AMF1X17UAMCZSP**

**Accessories & Replacement Parts:**

**Mounting Accessories  
(Order Separately, Field Installed)**

**BREBASE\*** Bollard Retrofit Base Kit Adapts New Bollards to Most Existing Bolt Patterns. Fits all InCon Bollards. Die Cast with Powdercoat Finish, Hardware Included. 1 1/2" Dia. x 1 1/2" H

\*Specify Color: Z=Bronze, B=Black, P=Platinum, C=Custom (Consult Factory)

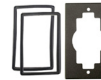


**BREBASE\***

\*Shown Mounted

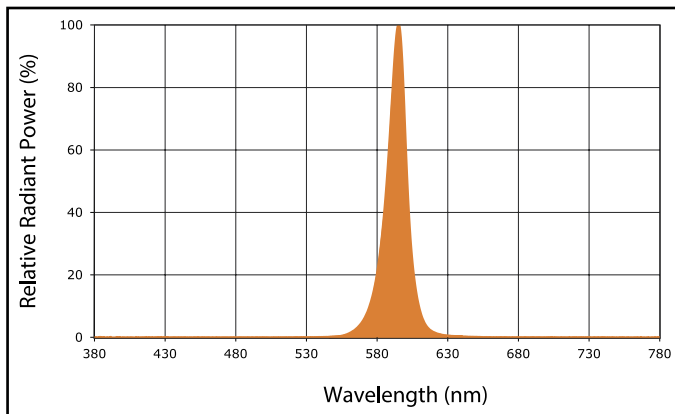
**Replacement Parts  
(Order Separately, Field Installed)**

**BOADP1** Adapter Plate with Gaskets for Outlet Boxes. Fits Atlantic Round Bollards. Die Cast with Bronze Powdercoat Finish.



**BOADP1**

**Spectral Chart**





### Photometric Performance

LED Board Watts	Input Watts	Optics	Amber LED				
			Lumens	LPW	B	U	G
AmberLED 17w	18.7w	Asymmetrical	145	8	0	0	0

### Projected Lumen Maintenance

Data shown for Amber LEDs TM-21-11	Input Watts	Compare to MH				Calculated LED Life
		Initial	25,000 Hrs	50,000 Hrs	100,000 Hrs	
L70 Lumen Maintenance @ 25°C / 77°F	17w	1.00	0.95	0.90	0.80	147,000
L70 Lumen Maintenance @ 50°C / 122°F		1.00	0.89	0.78	0.55	67,000
L80 Lumen Maintenance @ 40°C / 104°F		1.00	0.92	0.85	0.70	66,000

**NOTES:**

1. Projected per IESNA TM-21-11. Data references the extrapolated performance projections for the base model in a 25°C ambient, based on 10,000 hours of LED testing per IESNA LM-80-08.
2. Compare to MH box indicates suggested Light Loss Factor (LLF) to be used when comparing to Metal Halide (MH) systems.