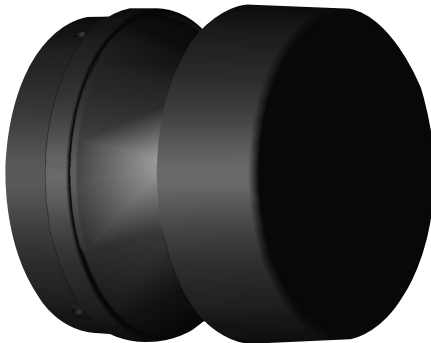
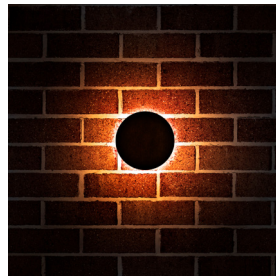




9035AM
Shown with 180° Shield

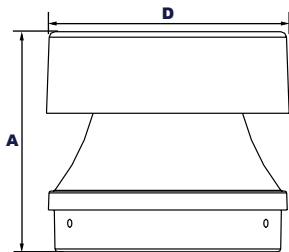


9033AM
Side View



9033AM
Shown Mounted

Dimensions



Diameter (D) | 4 3/4" (120mm)
Height (A) | 4 3/4" (117mm)

Project Information:

Project Name:	Fixture Type:
Complete Catalog #:	Date:
Comments:	

The Incon AmberLED Cypress 15D Deck/Wall mount luminaries provide full cutoff lighting for outdoor path, walkways and landscape areas using wide spread optics designed for wildlife, dark skies, or security applications requiring monochromatic AMBER light. LEDs operate between 585 and 595 nm, greater than 560nm required for wildlife protection. When mounted on walls between 8 to 20 feet the DW5 fixture provides accent wall wash pattern illumination. These fixtures are ideal for landscaped areas at retail centers, restaurants, hotels, schools and universities, office buildings and medical facilities.

Specifications and Features:

Housing:

Die Cast Aluminum Housing with 1/2" NPS Coin Plug on Bottom, Sealed Driver Compartment. 360° Distribution, or 120° or 180° Shield.

Listing & Ratings:

ETL: Listed for Wet Locations, ANSI/UL 1598, 8750; IP66 Sealed LED Compartment.

Finish:

Textured Architectural Bronze or Black Powdercoat Finish Over a Chromate Conversion Coating. Custom Colors Available Upon Request.

Lens:

Clear UV-Stabilized Polycarbonate Vandal-Resistant Lens

Mounting Options:

Mount Over a 4" Recessed Outlet Box.

AmberLED:

Aluminum Boards

Wattage:

360° Arrays: 14w, System: 16.1w
180° & 120° Arrays: 14w, System: 16.1w

Driver:

Electronic Driver, 120-277V, 50/60Hz; Less Than 20% THD and PF>0.90. Standard Internal Surge Protection 2kV. 0-10V Dimming Standard for a Dimming Range of 100% to 10%; Dimming Source Current is 150 Microamps.

Warranty:

5-Year Warranty for -40°C to +50°C Environment.

See Page 2 for Projected Lumen Maintenance Table.

Certification & Listings:

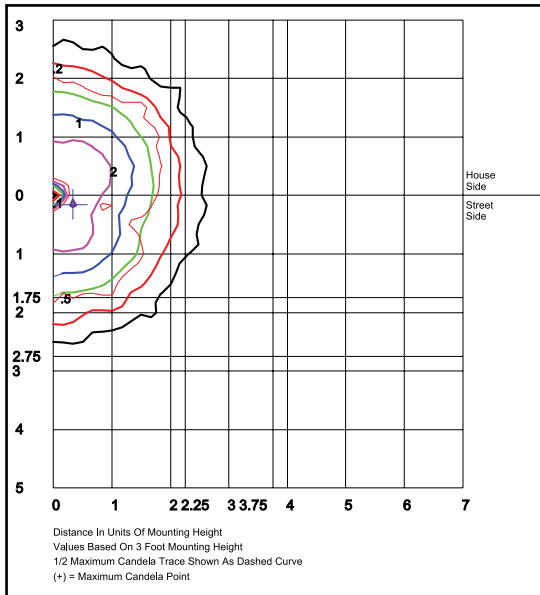


Ordering Guide:

	U	AM	C	
Model	Driver	CCT	Lens	Color
9033AMF1X14 =Deck/Wall Mount - 360°, 14w 9035AMF1X14 =Deck/Wall Mount with 120° Shield, 14w 9034AMF1X14 =Deck/Wall Mount with 180° Shield, 14w	U =120-277V	AM =1400K	C =Clear UV-Stabilized Polycarbonate Vandal-Resistant Lens	Z =Bronze B =Black C =Custom (Consult Factory)

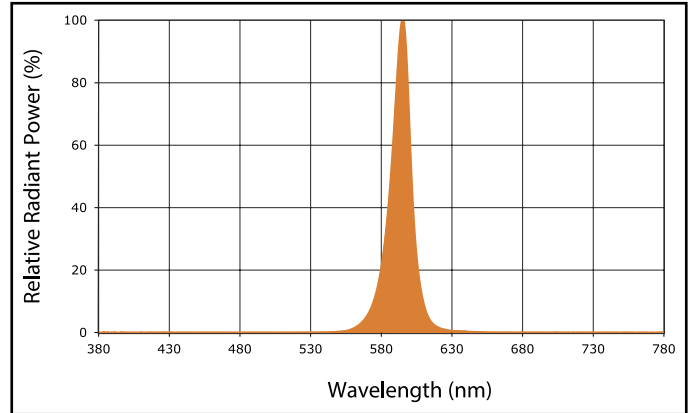
Order Information Example: 9033AMF1X14UAMCZ

Photometric Data



9033AMF1X14UAM
360° Open - Clear Glass Lens
Grid in feet, Mounting Height = 3 ft.

Spectral Chart



Photometric Performance

Wattage (Catalog Logic) 14W (1X14)			Wattage (Catalog Logic) 14W (1X14)		
Input Watts 16.1W			Input Watts 16.1W		
Optic	CCT	Delivered Lumens	Optic	CCT	Delivered Lumens
360° 9033AM Models F=Type V Optic	Amber	192	180° 9034AM Models F=Type V Optic	Amber	136
	BUG Rating	B0-U1-G0		BUG Rating	B0-U1-G0

Projected Lumen Maintenance

Data shown for Amber LEDs	Input Watts	Compare to MH				Calculated LED Life
		Initial	25,000 Hrs	50,000 Hrs	100,000 Hrs	
TM-21-11						
L70 Lumen Maintenance @ 25°C / 77°F	All wattages up to and including 14w	1.00	0.95	0.90	0.80	147,000
L70 Lumen Maintenance @ 50°C / 122°F		1.00	0.89	0.78	0.55	67,000
L80 Lumen Maintenance @ 40°C / 104°F		1.00	0.92	0.85	0.70	66,000

NOTES:

- Projected per IESNA TM-21-11. Data references the extrapolated performance projections for the base model in a 25°C ambient, based on 10,000 hours of LED testing per IESNA LM-80-08.
- Compare to MH box indicates suggested Light Loss Factor (LLF) to be used when comparing to Metal Halide (MH) systems.